

Symmetrix 8430-18/-36/-50

Symmetrix 8430-18/-36/-50



Open Systems and Mainframe Specifications

Sample Configuration Data

8430-18 Models

Physical Disks	Open Systems Raw Capacity (GB)*	Mirrored Capacity (GB)*		SRDF Capacity (GB)*		Raid-S Capacity (GB)*		Maximum Cache (MB)**
		Open	Mainframe	Open	Mainframe	Open	Mainframe	
8	144	72	71	144	143	108	107	32,768
12	217	108	107	217	214	162	161	32,768
16	289	144	143	289	286	217	214	32,768
32	579	289	286	579	572	434	429	32,768
64	1,158	579	572	1,158	1,145	868	859	32,768
96	1,737	868	859	1,737	1,718	1,303	1,288	32,768

8430-36 Models

Physical Disks	Open Systems Raw Capacity (GB)*	Mirrored Capacity (GB)*		SRDF Capacity (GB)*		Raid-S Capacity (GB)*		Maximum Cache (MB)**
		Open	Mainframe	Open	Mainframe	Open	Mainframe	
8	289	144	143	289	286	217	214	32,768
12	434	217	214	434	429	325	322	32,768
16	579	289	286	579	572	434	429	32,768
32	1,158	579	572	1,158	1,145	868	859	32,768
64	2,316	1,158	1,145	2,316	2,291	1,737	1,718	32,768
96	3,475	1,737	1,718	3,475	3,436	2,606	2,577	32,768

8430-50 Models

Physical Disks	Open Systems Raw Capacity (GB)*	Mirrored Capacity (GB)*		SRDF Capacity (GB)*		Raid-S Capacity (GB)*		Maximum Cache (MB)**
		Open	Mainframe	Open	Mainframe	Open	Mainframe	
8	397	198	196	397	392	298	294	32,768
12	596	298	294	596	589	447	441	32,768
16	795	397	392	795	785	596	589	32,768
32	1,590	795	785	1,590	1,571	1,192	1,178	32,768
64	3,180	1,590	1,571	3,180	3,142	2,385	2,356	32,768
96	4,771	2,385	2,356	4,771	4,713	3,578	3,535	32,768

Note: Hyper-Volume Extension can increase the number of logical volumes to 3,072 maximum. Configurations of mixed 18GB, 36GB, and 50GB disks are allowed.

*All capacities are based on 1GB=1,000,000,000 bytes. For AS/400 capacities, contact your EMC sales representative.

**Individual model cache capacities are based upon specific configurations and customer requirements.

Host Connectivity

8430-18/-36/-50	Open Systems		Mainframe	
	Min	Max	Min	Max
Fibre Channel – 2 pt.	4	12	–	–
Ultra SCSI – 4 pt.	8	24	–	–
ESCON** – 4 pt.	–	–	8	24

Note: Mixed ESCON, Ultra SCSI, and Fibre Channel interfaces are supported.

*ESP software is required to run ESCON mixed with SCSI and/or Fibre Channel interfaces.

Disk Emulation

8430-18/-36/-50	FBA	3380K	3390-1	3390-2	3390-3	3390-9
MB/Volume	15,979*	1,891	946	1,892	2,838	8,514
Bytes/Track	32,768	47,476	56,664	56,664	56,664	56,664
Bytes/Cylinder	491,520	712,140	849,960	849,960	849,960	849,960
Cylinders/Volume	32,510*	2,655	1,113	2,226	3,339	10,017

*Values represent maximum figures for each configuration.

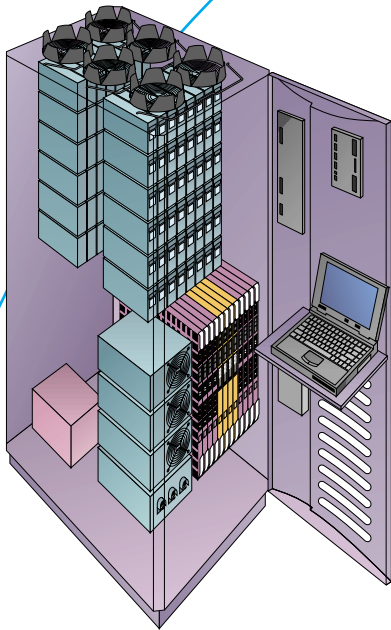
Hyper-Volume Extension (HVE)

Emulation Mode*	Open Systems		Mainframe				
	2GB**	4GB**	3380K**	3390-1	3390-2**	3390-3**	3390-9**
8430-18 Models							
Maximum Complete Logical Volumes	8	4	9	18	9	6	2
8430-36 Models							
Maximum Complete Logical Volumes	16	8	18	32	18	12	4
8430-50 Models							
Maximum Complete Logical Volumes	22	11	25	32	25	16	5

Hyper-Volume Extension provides the ability to configure a single physical disk device as multiple logical volumes in logical-to-physical relationships ranging from 1:1 to 32:1.

* A single physical disk device can support multiple model types within a single data format emulation mode.

** This emulation mode provides additional space on the physical disk device for use as either a lower than full capacity logical volume for the specified emulation mode, or as a different, smaller model type within the same emulation mode.



EMC²

EMC Corporation
Hopkinton
Massachusetts
01748-9103
1-508-435-1000

In North America
1-800-424-3622, ext. 362



The materials presented here are summary in nature, subject to change, and intended for general information only. Additional details and specifications concerning the operation and use of EMC equipment and software are available in the applicable technical literature.

EMC, EMC, and Symmetrix are registered trademarks, and The Enterprise Storage Company, EMC Enterprise Storage, ControlCenter, CopyCross, CopyPoint, EDM, InfoMover, PowerPath, SDMS, SRDF, TimeFinder, and Volume Logix are trademarks of EMC Corporation. VERITAS is a registered trademark of VERITAS Software Corporation. Other trademarks are the property of their respective owners.

© 2000 EMC Corporation. All rights reserved.
Printed in the USA. 4/00

Produced by EMC Global Communications.

Specification Sheet

C759

Available Software*

Information Protection	Symmetrix Remote Data Facility (SRDF) Symmetrix Data Migration Services (SDMS) CopyPoint CopyCross TimeFinder EDM EMC Foundation Suite by VERITAS EMC Database Edition for Oracle by VERITAS
Information Sharing	Symmetrix Enterprise Storage Platform (ESP) InfoMover
Information Management	EMC ControlCenter PowerPath Volume Logix Connectrix Manager

* Contact your EMC Sales Representative for software license model numbers, prerequisites, and additional information.

Multihost Support

Symmetrix Enterprise Storage systems support all popular hardware and operating system platforms and high availability cluster environments, including those from the vendors listed below. Contact your EMC representative for specific hardware, software, and cluster configuration support.

Vendor	Fujitsu Siemens	Linux	Silicon Graphics®	Windows 2000
Ascend	Hewlett Packard®	NCR®	Stratus®	
Bull®	IBM®	NEC	Sun Microsystems®	
Compaq®/DEC®	ICL®	Novell	Unisys®	
Data General®	Intel®-Based Servers	Sequent®	Windows NT	

Note: Contact your local EMC sales representative for specific hardware and software configurations.

Physical Specifications*

Height** (in/cm)	Width (in/cm)	Depth (in/cm)	Front Service Area (in/cm)	Rear Service Area (in/cm)
73.6/187	24.25/61.6	36.4/92.5	36.0/91.5	36.0/91.5

**An additional 18 inches (45.7cm) is required for ceiling/top clearance.

Weight*

Physical Volumes	8	12	16	32	64	96
Weight (lb/kg)	973/442	989/449	1,004/456	1,065/484	1,186/539	1,308/594

Power and Cooling Data*

Physical Volumes	8	12	16	32	64	96
Power Consumption (kVA)	1.24	1.35	1.47	1.92	2.82	3.71
Heat Dissipation (Btu/hr)	4,241	4,624	5,008	6,542	9,610	12,679

Power Specifications

	North America	International
Input Voltage (VAC)	208/240 (240 VAC is optimal)	Country Specific
Frequency (Hz)	60, single phase	Country Specific
Circuit Breaker (Amps), max.	30	Country Specific
User Connector	(2) Russellstoll® 3933 (flex) (2) Russellstoll 3753 (rigid)	Country Specific
Power Connector	(2) Russellstoll 3750	Country Specific
Auto-Call Modem Requirements	The Auto-Call modem requires connection to a 110VAC power source at 60Hz through a NEMA 5-15R receptacle. International installations are country specific.	

Environmental Specifications (operating)

Temperature (°F/°C)	50–90°F/10–32°C
Altitude (ft/m), max.	8,000/2,500
Humidity (%), non-condensing	20-80
Raised Floor	Required

*Values represent maximum figures for each configuration.