

Symmetrix 8830-36/-73/-181

Open Systems and Mainframe Specifications

Sample Configuration Data

8830-36 Models

Physical Disks	Open Systems Raw Capacity (GB)*	Mirrored Capacity (GB)*		SRDF Capacity (GB)*		RAID-S Capacity (GB)*		Maximum Cache (MB)**
		Open	Mainframe	Open	Mainframe	Open	Mainframe	
32	1,158	579	572	1,158	1,145	868	859	65,536
64	2,316	1,158	1,145	2,316	2,291	1,737	1,718	65,536
128	4,633	2,316	2,291	4,633	4,582	3,475	3,436	65,536
192	6,950	3,475	3,436	6,950	6,873	5,212	5,155	65,536
256	9,267	4,633	4,582	9,267	9,164	6,950	6,873	65,536
384	13,900	6,950	6,873	13,900	13,747	10,425	10,310	65,536

8830-73 Models

Physical Disks	Open Systems Raw Capacity (GB)*	Mirrored Capacity (GB)*		SRDF Capacity (GB)*		Maximum Cache (MB)**
		Open	Mainframe	Open	Mainframe	
32	2,339	1,169	1,154	2,339	2,309	65,536
64	4,678	2,339	2,309	4,678	4,618	65,536
128	9,356	4,678	4,618	9,356	9,237	65,536
192	14,035	7,017	6,928	14,035	13,856	65,536
256	18,713	9,356	9,237	18,713	18,475	65,536
384	28,070	14,035	13,856	28,070	27,713	65,536

8830-181 Models

Physical Disks	Open Systems Raw Capacity (GB)*	Mirrored Capacity (GB)*		SRDF Capacity (GB)*		Maximum Cache (MB)**
		Open	Mainframe	Open	Mainframe	
32	5,792	2,896	2,859	5,792	5,718	65,536
64	11,584	5,792	5,718	11,584	11,436	65,536
128	23,168	11,584	11,436	23,168	22,873	65,536
192	34,752	17,376	17,155	34,752	34,310	65,536
256	46,336	23,168	22,873	46,336	45,746	65,536
384	69,504	34,752	34,310	69,504	68,620	65,536

Note: Hyper-Volume Extension can increase the number of logical volumes to 8,000 maximum.

Configurations of mixed 36GB, 73GB, and 181GB disks are allowed up to 384 total disks.

12GB of the total raw capacity will be reserved for internal Symmetrix File System use.

*All capacities are based on 1GB=1,000,000,000 bytes. For AS/400 capacities, contact your EMC sales representative.

**Individual model cache capacities are based upon specific configurations and customer requirements.

Host Connectivity

8830-36/-73/-181	Open Systems		Mainframe	
	Min	Max	Min	Max
Fibre Channel – 2 pt.	4	16	–	–
Fibre Channel – 4 pt.	8	32	–	–
Fibre Channel – 8 pt.	16	64	–	–
Fibre Channel – 12 pt.	24	96	–	–
Ultra/Ultra 2 SCSI* – 4 pt.	8	32	–	–
ESCON® – 4 pt.	–	–	8	32
FICON – 2 pt.	–	–	4	16

*Support for both Ultra SCSI (40MB/Sec.) and Fast Wide SCSI (20MB/Sec.) modes

Note: Mixed ESCON, FICON, Ultra/Ultra 2 SCSI, and Fibre Channel interfaces are supported.

ESP software is required to run ESCON or FICON mixed with SCSI and/or Fibre Channel interfaces.

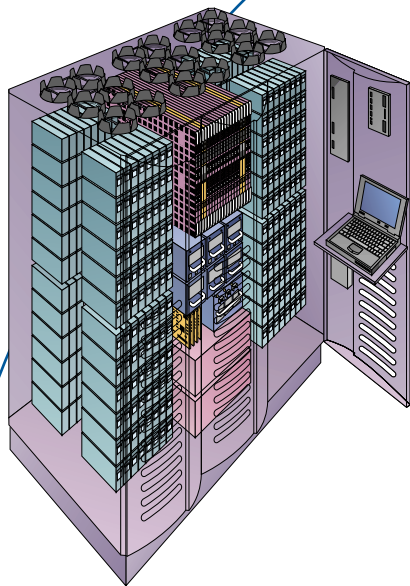
Disk Emulation

8830-36/-73/-181	FBA	3380K	3390-1	3390-2	3390-3	3390-9	3390-27
MB/Volume	15,979*	1,891	946	1,892	2,838	8,514	27,845
Bytes/Track	32,768	47,476	56,664	56,664	56,664	56,664	56,664
Bytes/Cylinder	491,520	712,140	849,960	849,960	849,960	849,960	849,960
Cylinders/Volume	32,510*	2,655	1,113	2,226	3,339	10,017	32,760

*Values represent maximum figures for each configuration.

Symmetrix 8830-36/-73/-181





Hyper-Volume Extension (HVE)

	Open Systems			Mainframe					
	2GB**	4GB**	9GB**	3380K**	3390-1	3390-2**	3390-3**	3390-9**	3390-27**
Emulation Mode*									
8230-36 Models									
Maximum Complete Logical Volumes	18	9	4	18	37	18	12	4	1
8230-73 Models									
Maximum Complete Logical Volumes	36	18	8	36	75	38	25	8	2
8230-181 Models									
Maximum Complete Logical Volumes	90	45	20	91	128	94	62	21	6

Hyper-Volume Extension provides the ability to configure a single physical disk device as multiple logical volumes in logical-to-physical relationships ranging from 1:1 to 128:1.

* A single physical disk device can support multiple model types within a single data format emulation mode.

** This emulation mode provides additional space on the physical disk device for use as either a lower than full capacity logical volume for the specified emulation mode, or as a different, smaller model type within the same emulation mode.

Available Software*

Information Protection	Information Protection SRDF/Data Mobility CopyPoint TimeFinder EMC Data Manager (EDM)	Symmetrix Remote Data Facility (SRDF) Symmetrix Data Migration Services (SDMS) CopyCross GeoSpan EMC Foundation Suite and Database Edition for Oracle
Information Sharing	InfoMover	Symmetrix Enterprise Storage Platform (ESP)
Information Management	ESN Manager EMC ControlCenter Suite PowerPath Connectrix Manager	Resource Pak for Windows Catalog Solutions Symmetrix Data Mobility Manager

* Contact your EMC sales representative for software license model numbers, prerequisites, and additional information.

Multihost Support

Symmetrix Enterprise Storage systems support all popular hardware and operating system platforms and high availability cluster environments, including those from the vendors listed below. Contact your EMC representative for specific hardware, software, and cluster configuration support.

Vendor				
Ascend	Fujitsu Siemens	Linux	Silicon Graphics	Windows 2000
Bull	Hewlett Packard®	NCR	Stratus	
Compaq/DEC	IBM	NEC	Sun Microsystems	
Data General	ICL	Novell	Unisys	
Dell	Intel-based Servers	Sequent	Windows NT	

Physical Specifications*

Height** (in/cm)	Width (in/cm)	Depth (in/cm)	Front Service Area (in/cm)	Rear Service Area (in/cm)
74.9/190.3	68.7/174.5	36.4/92.5	48.0/122.0	36.0/91.5

**An additional 18 inches (45.7cm) is required for ceiling/top clearance.

Weight*

Physical Volumes	32	64	96	128	160	192	224	256	320	384
Weight (lb/kg)	2459/1118	2580/1173	2702/1228	2823/1283	2945/1339	3067/1394	3188/1449	3310/1505	3553/1615	3796/1725

Power and Cooling Data*

Physical Volumes	32	64	96	128	160	192	224	256	384
Power Consumption (kVA)	4.44	5.30	6.16	7.03	7.89	8.76	9.62	10.48	14.00
Heat Dissipation (Btu/hr)	15,153	18,088	21,024	23,993	26,928	29,897	32,833	35,768	47,782

Power Specifications

	North America	International
Input Voltage (VAC)	208/240 (240 is optimal)	Country Specific
Frequency (Hz)	60, three phase, four wire	Country Specific
Circuit Breaker (Amps), max.	50	Country Specific
User Connector	(2) Russellstoll 9C54U2 (flex) (2) Russellstoll 9R54U2W (rigid)	Country Specific
Power Connector	(2) Russellstoll 9P54U2	Country Specific
Auto-Call Modem Requirements	The Auto-Call modem requires connection to a 110VAC power source at 60Hz through a NEMA 5-15R receptacle. International installations are country specific.	

Environmental Specifications (operating)

Temperature (°F/°C)	50–90°F/10–32°C
Altitude (ft/m), max.	8,000/2,500
Humidity (%), non-condensing	20-80
Raised Floor	Required

*Values represent maximum figures for each configuration.

EMC²

EMC Corporation
Hopkinton
Massachusetts
01748-9103
1-508-435-1000

In North America
1-800-424-3622, ext. 362

EMC, EMC, and Symmetrix are registered trademarks and where information lives, EMC Enterprise Storage, ControlCenter, InfoMover, PowerPath, SDMS, SRDF, and TimeFinder are trademarks of EMC Corporation. Other trademarks are the property of their respective owners.

© 2002 EMC Corporation. All rights reserved.
Produced in the USA. 06/02

Specification Sheet
C869.3